

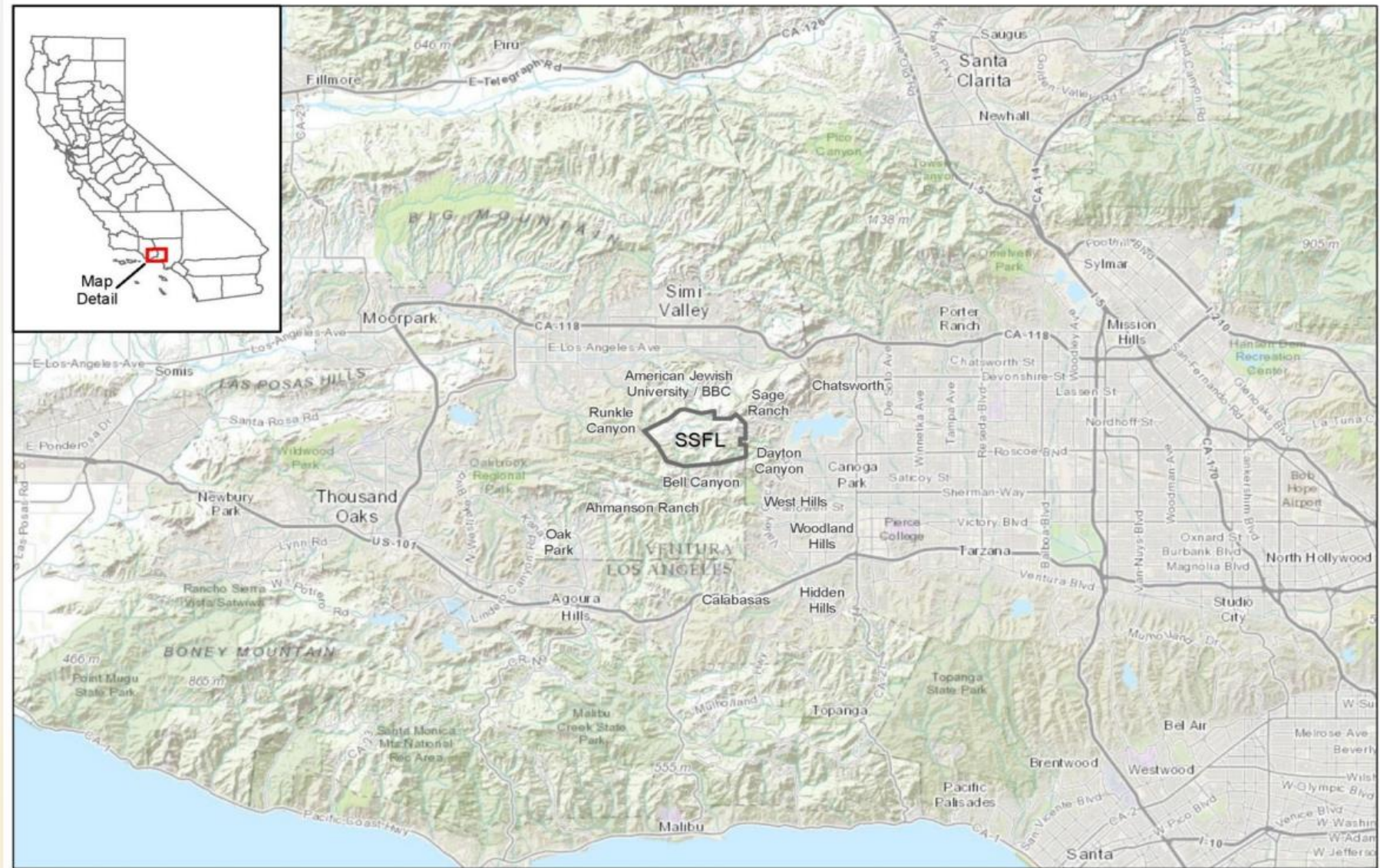
**WEST HILLS NEIGHBORHOOD COUNCIL
ENVIRONMENT COMMITTEE
BRIEF PRESENTATION ON THE
SANTA SUSANA FIELD LABORATORY
OCTOBER 11, 2023**

CHRIS ROWE

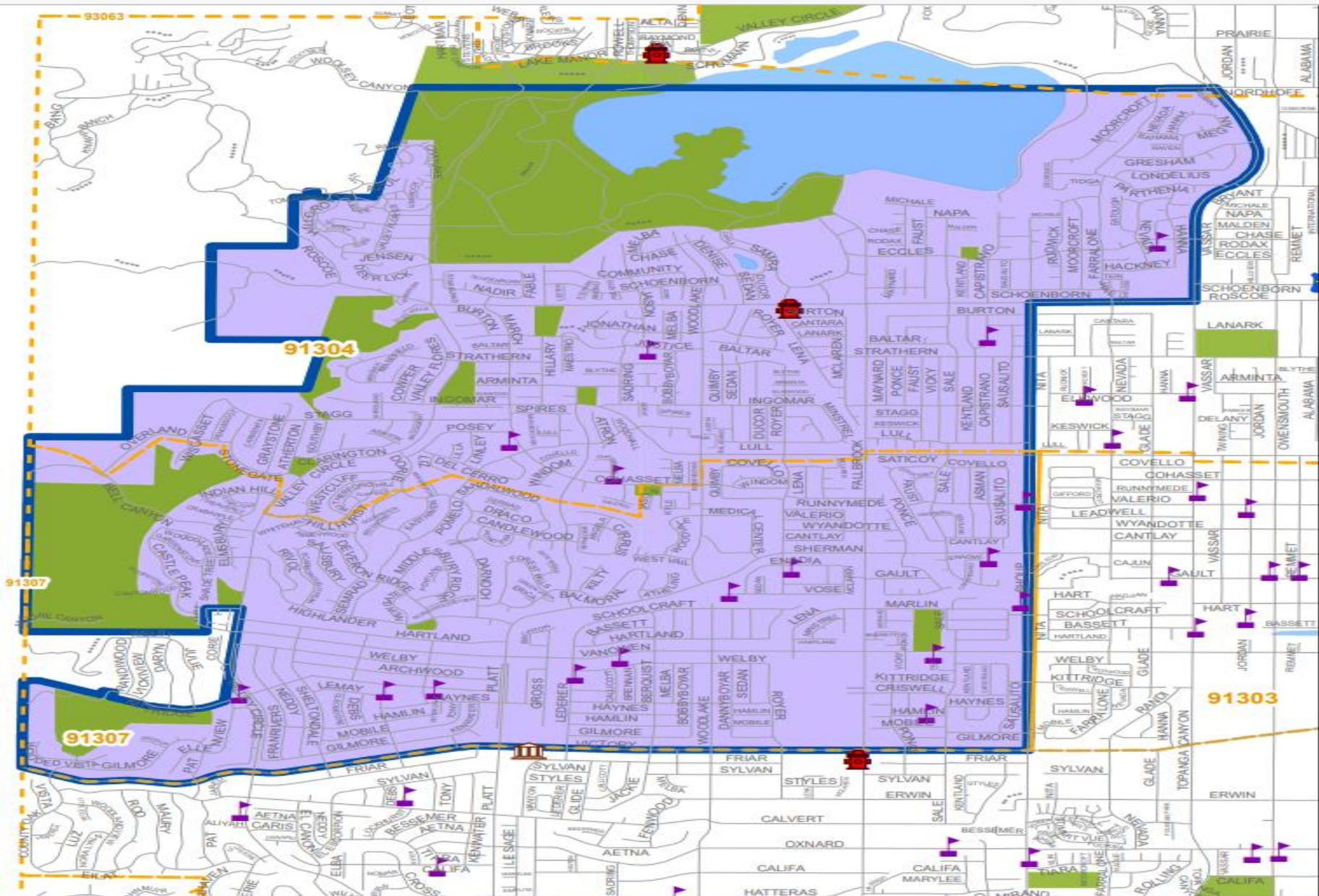
**FORMER WEST HILLS NEIGHBORHOOD COUNCIL
BOARD MEMBER**

**FORMER PUBLIC HEALTH AND ENVIRONMENT
COMMITTEE CHAIR**

Site Location Map








MAP OF SANTA SUSANA FIELD LABORATORY (SSFL) LOCATION FROM CALIFORNIA DEPARTMENT OF SUBSTANCES CONTROL (DTSC) PRESENTATION MADE TO THE LOS ANGELES REGIONAL WATER QUALITY CONTROL BOARD (LARWQCB) ON SEPTEMBER 28, 2023

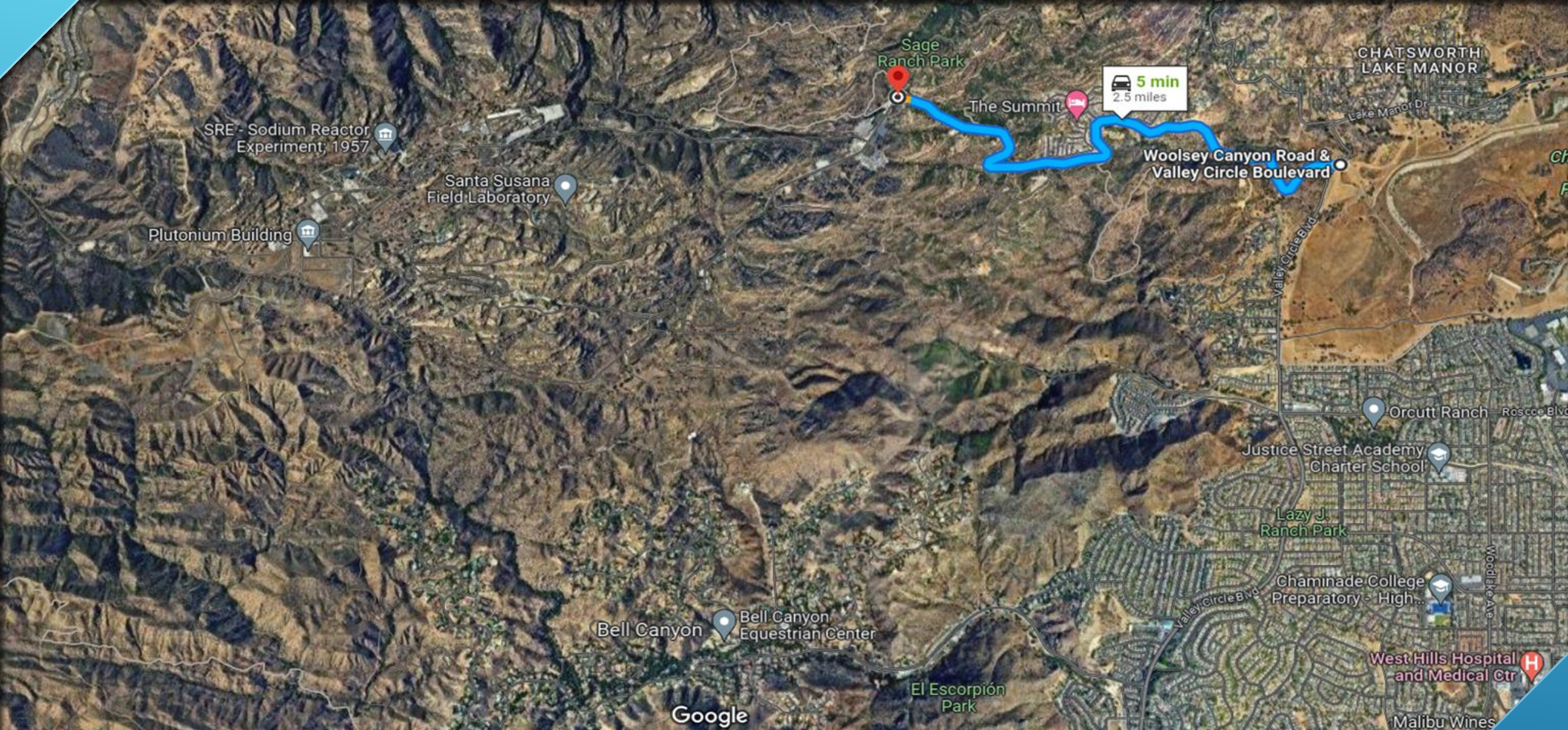


WEST VALLEY AREA
COUNCIL DISTRICT: 12
WEST HILLS

Election Division
 NCE Section
<http://cityclerk.lacity.org/election>

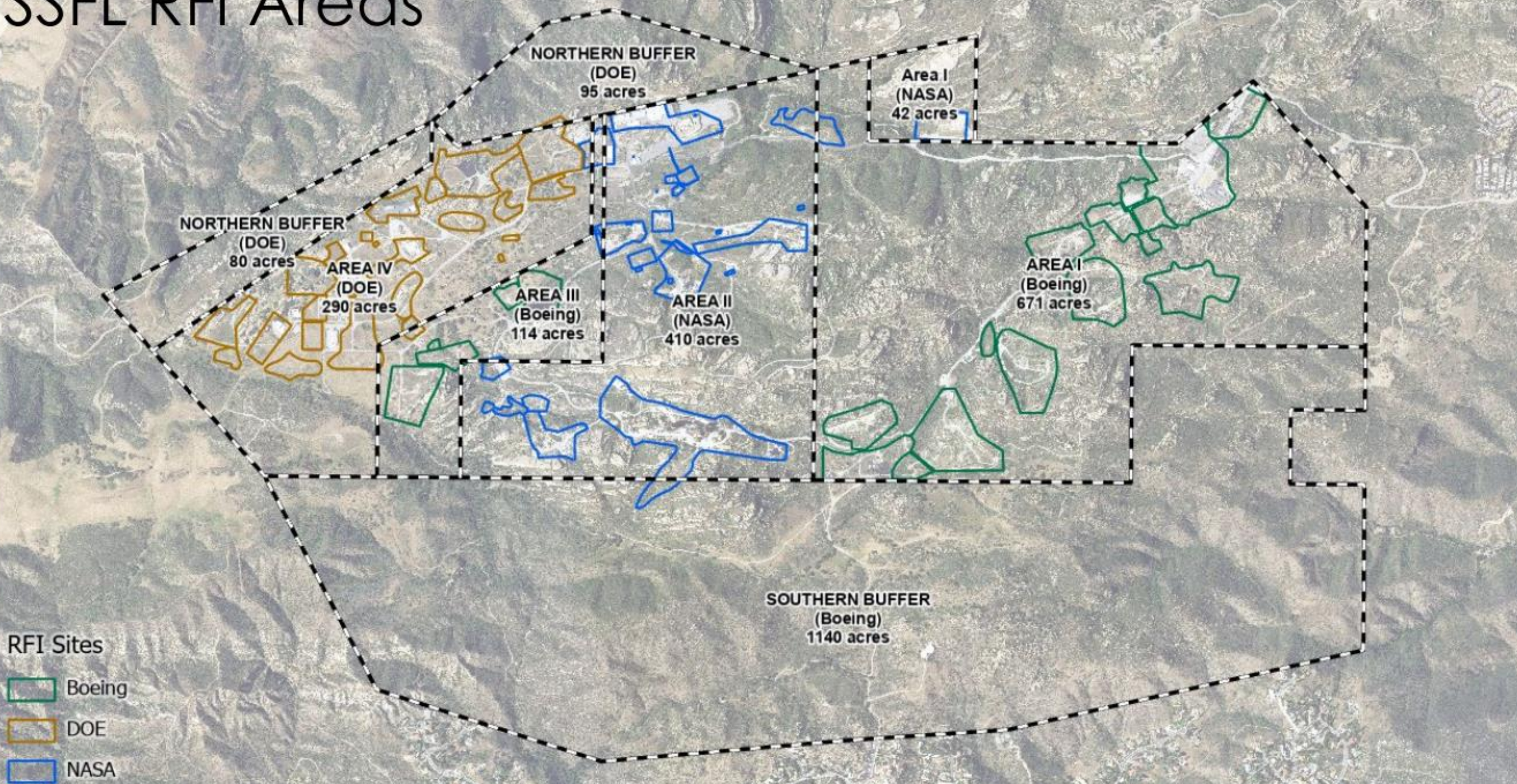
-  Library
-  Fire Station
-  Police Station
-  School
-  Freeway
-  Zip Codes
-  Rec Areas
-  Water

THE WEST HILLS NEIGHBORHOOD COUNCIL MAP BOUNDARIES GO TO THE CITY OF LOS ANGELES' WESTERN BOUNDARY NEAR WOOLSEY CANYON ROAD AND VALLEY CIRCLE BOULEVARD IN THE NORTHWEST



MAP SHOWING LOCATION OF SSFL RELATIVE TO WEST HILLS – DISTANCE FROM VALLEY CIRCLE BLVD AND WOOLSEY CANYON ROAD IS ONLY 2.5 MILES
WHY IS THIS IMPORTANT? BECAUSE AT MOST MEETINGS THE SSFL SITE IS REFERENCED AS ABOUT 30 MILES NORTHWEST OF DOWNTOWN LOS ANGELES. IT IS IMPORTANT TO CONSIDER ITS PROXIMITY TO COMMUNITIES SUCH AS WEST HILLS, CHATSWORTH, WOODLAND HILLS, AND CANOGA PARK.


SSFL RFI Areas



- RFI Sites
- Boeing
 - DOE
 - NASA
 - Administrative Boundary

WHY IS THIS IMPORTANT TO KNOW – THE LOCATION OF THE SANTA SUSANA FIELD LABORATORY SITE AND ITS PROXIMITY TO WEST HILLS?

The reason to know where the SSFL site is located is that all of the trucks that drive to and from the site will go there via Woolsey Canyon Road and Valley Circle Blvd. As the loaded trucks come down, they most likely will go south on Valley Circle Blvd and turn east on Roscoe Blvd to Topanga Canyon Blvd. There they will most likely go north to the 118 Freeway.



WHAT IT IS IMPORTANT FOR YOU TO KNOW IS WHERE TO GET ACCURATE INFORMATION ON THE SANTA SUSANA FIELD LABORATORY CLEANUP.

IT IS EXTREMELY IMPORTANT TO KNOW THAT THERE IS MISINFORMATION IN THE NEWS MEDIA, IN MOVIES, ON YOUTUBE, AND SOCIAL MEDIA SUCH AS FACEBOOK, ETC.

Your primary source of information relative to the Santa Susana Field Laboratory should be from the DTSC SSFL website:

Santa Susana Field Laboratory (SSFL) Home: https://dtsc.ca.gov/santa_susana_field_lab/

Santa Susana Field Laboratory Contact Information

DTSC welcomes your comments, questions and feedback! There are several ways to contact us. Jamie Slaughter is the SSFL Public Participation Specialist at DTSC and is available to address any questions or concerns you may have. You may also contact DTSC's SSFL Project Director or Project Team Manager directly.

Project Director/Project Coordinator

Steven Becker
DTSC
8800 Cal Center Drive
Sacramento, CA 95826
Phone: (916) 255-3717
E-mail: Steven.Becker@dtsc.ca.gov

Public Participation

Jamie Slaughter, DM
DTSC, Public Participation and
Community Affairs Management
9211 Oakdale Avenue
Chatsworth, CA 91311
Phone: (818) 938-8353
E-mail: Jamie.Slaughter@dtsc.ca.gov

Program Manager

Mindy Mathias
DTSC
8800 Cal Center Drive
Sacramento, CA 95826
Phone: (916) 282-8805
Fax: (916) 255-3696
Email: Mindy.Mathias@dtsc.ca.gov

Media Contact: Public Information Officer

Elizabeth Leslie-Gassaway
DTSC
1001 I Street
Sacramento, CA 95814
Phone: (916) 282-8941
E-mail: Elizabeth.Leslie-Gassaway@dtsc.ca.gov

SSFL Links

- [SSFL Home](#)
- [About SSFL](#)
- [Boeing Cleanup Settlement Agreement](#)
- [What's New](#)
- [Document Library](#)
- [Public Involvement](#)
- [Site Activities](#)
- [Regulatory Oversight](#)
- [SSFL Final PEIR](#)
- [Additional Resources](#)
- [SSFL Archive](#)
- [Contact Information](#)
- [Subscribe to SSFL E-List](#)
- [Frequently Asked Questions \(FAQs\)](#)

SSFL Related Links

- [US EPA](#)
- [NASA SSFL News](#)
- [Boeing SSFL](#)
- [DOE Energy Technology Engineering Center](#)

Site Mitigation & Restoration Program Links

YOU SHOULD BE AWARE THAT DTSC HAS FINISHED ITS FINAL PROGRAM ENVIRONMENTAL IMPACT REPORT ON THE SSFL SITE:

[HTTPS://DTSC.CA.GOV/SANTA_SUSANA_FIELD_LAB/FPEIR/](https://dtsc.ca.gov/santa_susana_field_lab/fpeir/)

We need the West Hills Neighborhood Council Board members to become more involved in the Santa Susana Field Laboratory site so that they in their capacity as an advisory body to the City of Los Angeles can take their concerns to their City Councilmember and to the Mayor of Los Angeles.

The WHNC Board members need to work in collaboration with their closest Neighboring Councils on this issue.



CONTROL HOUSE WITH ALFA TEST STAND IN THE BACKGROUND

THANK YOU TO WHNC BOARD
MEMBERS WHO HAVE TOURED
THE SSFL SITE AND WHO HAVE
BEEN ENGAGED IN THE SSFL
CLEANUP PROCESS!

THANK YOU TO PETER ZORBA OF
NASA FOR THE WHNC NASA SSFL
TOUR!